

Sample Case #1



The highest commitment to excellence.

Sample Case #1

Opening Scenario:

A 10-year, 8-month-old female has been referred by a dentist for an orthodontic evaluation. The mother's chief complaint is that her daughter "doesn't have room for all of her teeth".

Sample Case #1

Question 1

Classification

Domain 1: Data Gathering and Diagnosis

Prompt

Which skeletal maturation indicators can be used when evaluating the hand-wrist film?

Fully Proficient Model Response

The board expects a fully proficient response for this question to include four indicators and a borderline proficient response to include three.

Sample Case #1

Question 2



Sample Case #1

Question 2

Classification

Domain 1: Data Gathering and Diagnosis

Prompt

Using the image provided, assess the skeletal maturation of this patient. List the appropriate indicators and the conclusion drawn from those indicators.

Model Responses

The board expects a fully proficient response for this question to address four indicators and provide a correct conclusion. A borderline proficient response should address three indicators and provide a correct conclusion.

Sample Case #1

Question 3



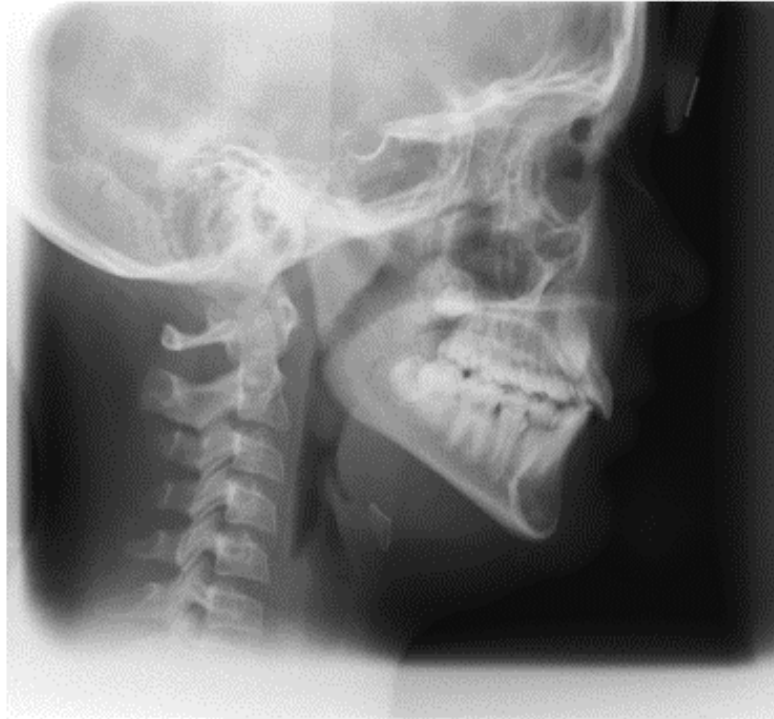
Sample Case #1

Question 3



Sample Case #1

Question 3



Sample Case #1

Question 3

Classification

Domain 2: Treatment Objectives and Planning

Prompt

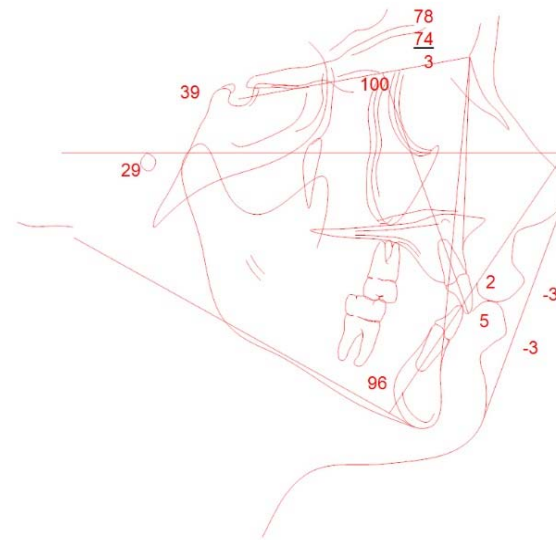
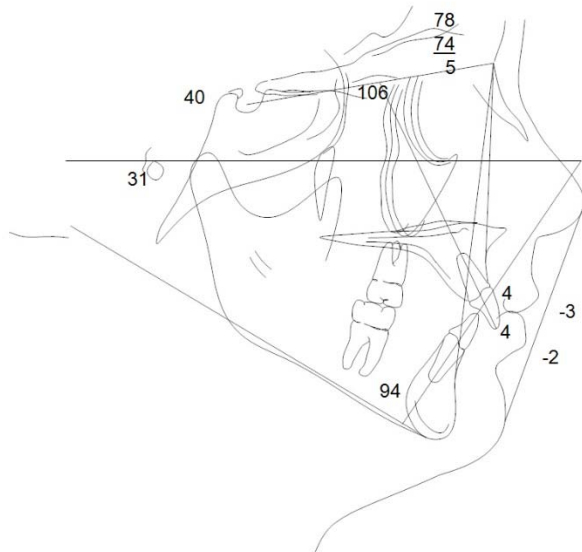
Describe the treatment possibilities for mandibular crowding without compromising the facial profile.

Model Responses

The board expects a fully proficient response for this question to contain three treatment options and a borderline proficient response to contain two treatment options.

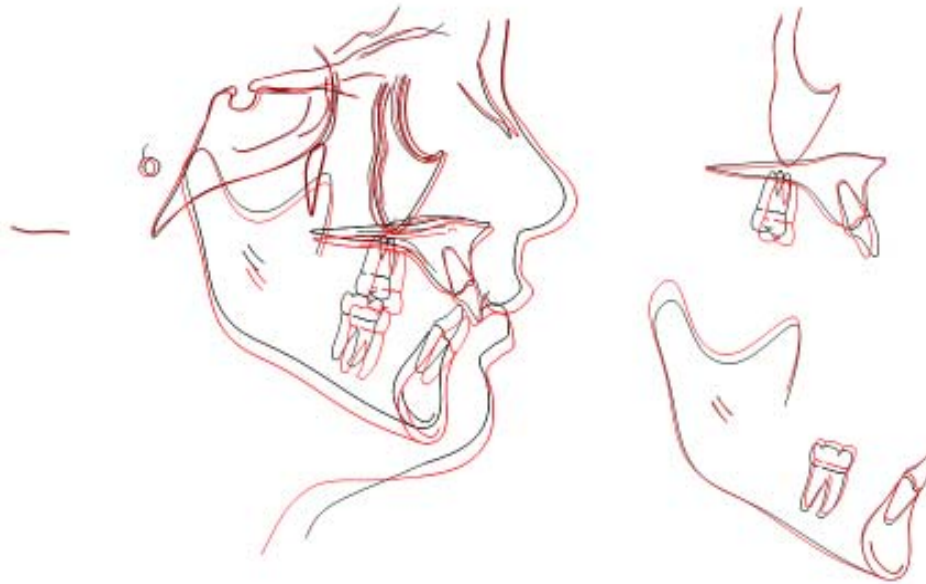
Sample Case #1

Question 4



Sample Case #1

Question 4



Sample Case #1

Question 4

Classification

Domain 4: Critical Analysis and Outcomes Assessment

Prompt

Using the superimpositions, identify which skeletal and dental changes occurred during treatment.

Model Responses

The board expects a fully proficient response for this question to contain six observations and a borderline proficient response to contain five observations.