

ABO Sample Case Recordings



The highest commitment to excellence.

Sample Case Disclaimer

- The following sample questions and answers were composed and vetted by a panel of experts in orthodontics and are intended to provide an example of the types of cases and questions that make up the actual examination.
- During the actual examination, trained examiners, who are all board certified orthodontists, will score responses using rubrics as guides to their decision making.
- Using the rubrics help to create consistency in the decisions the examiners will make as examinees deliver their oral responses. The rubrics are not absolute, as there may be other acceptable answers that are not listed.

Sample Case Disclaimer Cont.

- The ABO has developed multiple versions of the case-based scenario examination to be used during a test administration cycle. Although the set of cases and questions used on the different versions will not all be the same, all versions follow the same content framework as defined by the practice analysis study.
- Scores will be computed using equating procedures to ensure that all versions are of the same difficulty.
- Review of these sample cases does not guarantee that a candidate will pass the examination.

Case Recordings

Case #1


Case #1

Slide 1
PRE TX



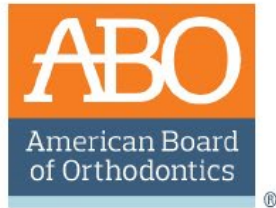
Slide 2
PRE TX

Measure	Value
SNA	89.4
SNB	86.1
ANB	3.2
Wits	-1.6
FMA	15.8
SN-GoGn	19.9
UI-SN	105.6
IMPA	92.6
Upper lip	-8.0
Lower lip	-7.1



Slide 3

Opening Scenario

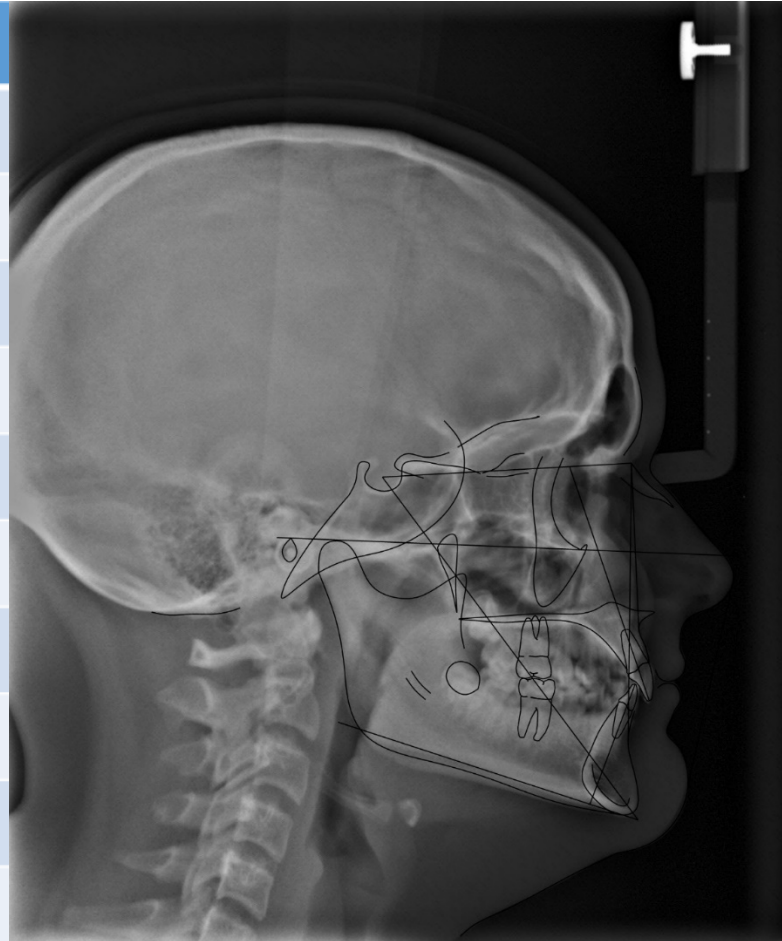


Case #1



Case #1

Measure	Value
SNA	89.4
SNB	86.1
ANB	3.2
Wits	-1.6
FMA	15.8
SN-GoGn	19.9
U1-SN	105.6
IMPA	92.6
Upper lip	-8.0
Lower lip	-7.1



Case #1

A 14-year, 9-month-old female presents with a chief complaint that “I don’t like my bite.”

Question #1

Describe the facial characteristics of this patient.

Question #1

Fully Proficient Model Response

The examinee's response must include six or more of the following:

- Straight profile
- Prominent soft tissue pogonion
- Deep mentolabial sulcus
- Obtuse nasolabial angle
- Obtuse chin-throat angle
- Deficient vermilion display
- Poor maxillary incisor display

Question #1

Borderline Proficient Model Response

The examinee's response must include five of the above responses.

Not Proficient Model Response

The examinee's response includes four or less of the above responses.

Question #1

[Recording #1 \(Click Here\)](#)

Fully Proficient

[Recording #2 \(Click Here\)](#)

Not Proficient

Case Recordings

Case #2

Case #2

Slide 1
PRE TX



Slide 2
PRE TX




Slide 3
PRE TX



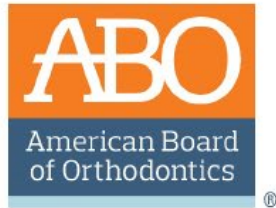
Slide 4
PRE TX

Measure	Value
SNA	80.6
SNB	73.9
ANB	7.6
Wits	2.8
FMA	27.7
Sn-GoGn	34.2
U1-SN	100.0
IMPA	105.5
Upper lip	-0.4
Lower lip	2.7

A lateral cephalometric radiograph with various measurement lines and points marked on the skull and teeth.

Slide 5

Opening
Scenario



Case #2



Case #2



Case #2



Case #2

Measure	Value
SNA	80.6
SNB	73.9
ANB	7.6
Wits	2.8
FMA	27.7
Sn-GoGn	34.2
U1-SN	100.0
IMPA	105.5
Upper lip	-0.4
Lower lip	2.7



Case #2

A 13-year, 8-month-old female patient presents with the chief complaint that “My teeth are not straight.”

Question #1

Identify treatment objectives for the maxillary and mandibular incisors.

Question #1

Fully Proficient Model Response

The examinee's response must include five of the following:

- Retract the maxillary incisors
- Control maxillary incisor torque
- Minimize vertical changes to maxillary incisors
- Retract the mandibular incisors
- Control mandibular incisor torque
- Intrude mandibular incisors (level curve of Spee)
- Correct the mandibular dental midline to the left

Question #1

Borderline Proficient Model Response

The examinee's response must include four of the above responses.

Not Proficient Model Response

The examinee's response includes three or less of the above responses.

Question #1

[Recording #1 \(Click Here\)](#)

Borderline Proficient

[Recording #2 \(Click Here\)](#)

Fully Proficient